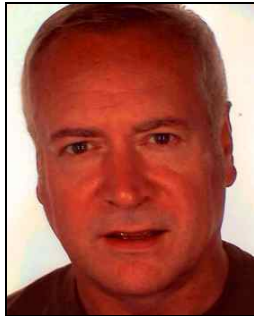




Cross Boundary Solutions Ltd
[www.http://crossboundariesolutions.org](http://crossboundariesolutions.org)

Drawing on art, ethics and personal energy management system to create focussed and magnetic business



Kevin Dixon

About the talk

In the context of economic recession, climate change and technological revolution leaders are challenged with potential crisis on how best to organise, sustain and create new business and satisfy their customers for lasting relationships. Drawing on his chapter ***“Energy World” In “Mind-ful Consulting”*** (Ed Sue Whittle & Karen Izod, Karnac, 2009) Kevin will talk about drawing on art, ethics and energy to create focussed and “magnetic business” through a Personal Energy Management System (PEMS). Kevin will provide simple exercises for participants to experience their personal energy pattern and explore ways of using art and ethics to connect emotion and motion to business mission.

Magnetic Leadership creates magnetic business. Magnetic leadership re-connects power and energy. Participants will learn about the Focus Energy Balance Indicator (FEBI) that enhance participants’ “emotional intelligence” and mindfulness in the body: what personal energy is, where personal energy comes from, how to use personal energy to ‘light up life and others’, know where to start, where energy leakages occur, how to re-charge the batteries, and understand the role of energy in mission accomplishment.

Ethical leadership creates trusted business. Participants will learn how art can be used to access a deep understanding of the emotional needs of

individuals, groups and organisations that helps work with differences and creates passion for success. Using the metaphor of a “TARDIS” (Time and Relative Dimensions in Space) as a PRISM of ethical theory participants will learn how it is possible to strengthen their ethical stance whilst creating business trust both inside and outside the organisation.

Personal Energy Management System (PEMS)

PEMS helps:

- Create organisation vision, collaboration, planning and drive for mission success
- Discover how to build energy-balanced teams and identify energy-gaps, strengths and weaknesses in project teams
- Identify personal energies required to achieve career trajectories
- inquire, appreciate, create new possibilities for competitive advantage and emotional resilience that attracts and retains staff and customers

Participant outcomes

Participants will

- experience the 4 FEBI energy patterns Visionary, Driver, Organise, and Collaborator
- be able to identify their preferred “home energy pattern” and discuss how these might affect work behaviours of themselves and the people they lead
- consider the risks of their weakest pattern as a potential risk area
- consider development recommendations for themselves, project teams and organisation
- use their senses and body to feel and be mindful whilst working in the moment

Target audience

- Boards and Corporate Services seeking to develop Mission, Strategy and Succession Plans
- Leaders who wish to access their own energy and creativity and want to balance individual and team energies for effective project delivery
- Finance and other professionals working across organisational boundaries, in cross-functional and project-based teams who want to build their ‘emotional’ and ‘motional’ intelligence to collaborate effectively with others
- Management Consultants and Executive Coaches interested in “mindful consulting” and the Focus Energy Balance Indicator (FEBI) and Personal Energy Management System (PEMS) as ‘tools’ for working with clients
- MBA graduates and students mind-ful of developing their career trajectory, to plan for and manage the use of their personal energies

- Educators, Media, Artists interested in experiential learning, art and ethics and exploring the possibility of working with business creativity and innovation.

About the speaker

Kevin Dixon is Leadership Consultant and Coach of Cross Boundary Solutions Ltd, Bournemouth. Kevin previously held senior financial management and internal consulting positions in HM Treasury, Serious Fraud Office, and the Department of Finance in Dublin before starting his private practice in 2005. Kevin is an accountant (ACMA) and graduate of the renowned Masters in Advanced Organisational Change & Consulting, and an Associate of the Tavistock Institute. Kevin also works as education professional to the new International MBA at Bournemouth University Business School. Kevin is Treasurer and Trustee of the Environmental Law Foundation and member of the International Society for the Psychoanalytic Study of Organisations (ISPSO), the Organisation Promoting Understanding of Society (OPUS), Institute of Business Ethics and European Business Ethics Network.